

A high impact lightbox display solution, just add your own graphics. Ideal for promotional displays



## features & benefits

- 'D' shaped profile lightbox
- Available in A1, A2 and A3 sizes
- Snap frame sides enable easy change of graphics
- Complete with TFL cool fluorescent tube, mains lead and plug
- Quality aluminium frame construction
- Wall fixing, portrait or landscape
- UPVC protective graphics covers
- CE approved

## technical information

- Suitable for indoor use only
- Fluorescent tube specification:  
A1 size 20 watt; A2 size 16 watt; A3 size 8 watt
- Fluorescent tube life: 5000hrs approx
- Supplied complete with 1500mm approx power lead and UK or Euro style plug



'D' shaped profile



Screw ports for wall mounting

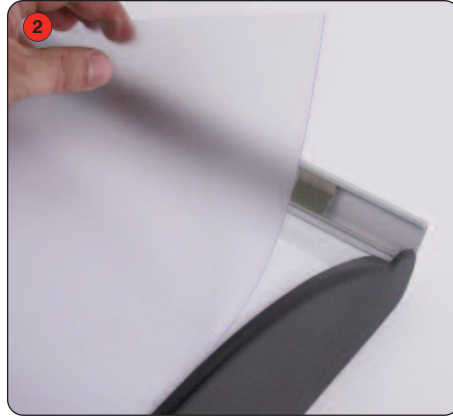
hardware specifications	graphic specifications	additional info
<p><b>ML901 (A1)</b> Assembled Dimensions: 847mm (h) x 580mm (w) x 130mm (d) approx Weight: 5.3kgs approx</p> <p><b>ML902 (A2)</b> Assembled Dimensions: 600mm (h) x 410mm (w) x 110mm (d) approx Weight: 3kgs approx</p> <p><b>ML903 (A3)</b> Assembled Dimensions: 420mm (h) x 290mm (w) x 95mm (d) approx Weight: 1.7kgs approx</p>	<p>Please refer to Graphic template</p>	<p>Availability: Moulded black end caps with anodised silver snap frame sides</p> <p>Recommended Graphic Substrate: 200 micron thick Duratrans or equivalent</p> <p>Maximum Graphic Thickness: 1mm</p>

# Assembly Instructions

**Before assembling or changing graphics ensure the unit is disconnected from the power supply.**



Open out both snap frame sides.



Remove the clear protective sheet.



Fit the graphic into the lightbox.



Re-fit the protective sheet over the graphic.



Close the snap frame sides to secure the graphic into place.

