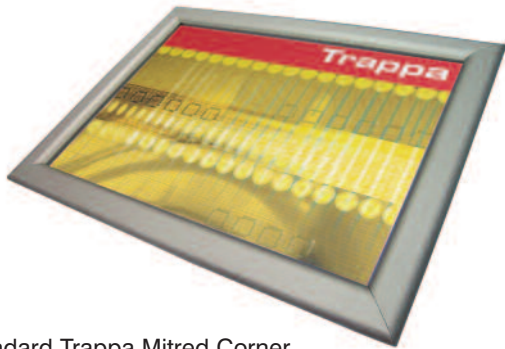


# Trappa Frames

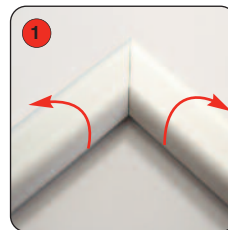


Standard Trappa Mitred Corner  
25mm Frame  
AT401 - AT408

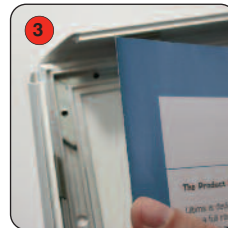
A range of stylish frames with snap action for quick and easy change of graphics.

## features & benefits

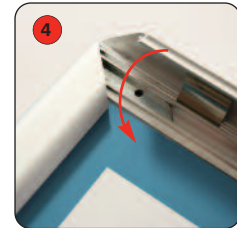
- Simple snap action poster frame
- Aluminium with anodised silver finish
- Wall mounted
- Suitable for substrates up to 1mm thick



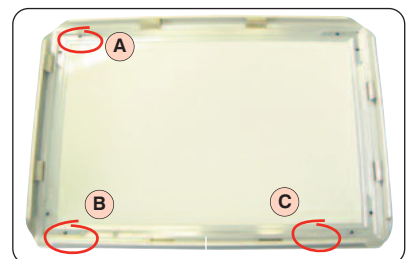
Open out the spring loaded frame sides and remove the clear protective sheets.



Place the poster into the frame recess.



Cover the poster with the clear protective sheet and close each spring loaded side.



To fix to the wall, locate the 3 holes on the frame underneath the edging. If a landscape format is required, use the two holes on the longer edge (B + C), or for portrait, use the holes opposite to each other (A + B).



Drill 2 holes into the wall and then screw into position. Follow steps 1 to 4 above to add a poster to the frame. (NB Screw fixings are not supplied)

## technical information

Frame material:  
Anodised aluminium

Protective sheet material:  
PVC

Frame colour:  
Silver (other colours available upon request)

Mounting:  
Trappa frames can be wall mounted in either portrait or landscape formats

## poster sizes (mm)

Visible size (mm) Standard Trappa

A0	(821 x 1169)
A1	(574 x 821)
A2	(400 x 574)
A3	(277 x 400)
A4	(190 x 277)
A5	(128 x 190)